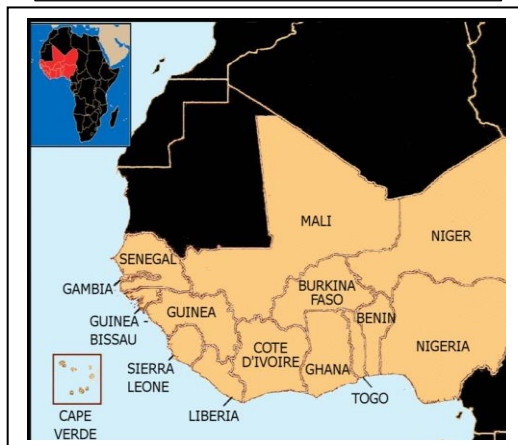


Knowledge Organiser- African Art (Visual Arts – Year Five)

Key Vocabulary	Definition
peoples	Members of a particular nation or community.
ceremony	A social or religious occasion often celebrating a particular event.
Bamana peoples	A group of peoples living mainly in Mali, Western Africa.
headdress	A covering for the head, especially worn in ceremonies.
Edo peoples	A group of peoples living mainly in southern Nigeria.
Benin City	A city in southern Nigeria, West Africa. Benin City flourished from the 14 th -17 th centuries as the centre of the Benin Kingdom.
plaque	A flat, decorated slab, often square or rectangle that is fixed, to a wall or other surface and remembers an event or a person.
cast	The process of making an object by shaping liquid metal in a mould.
brass	A metal made by mixing two other metals, copper and zinc.
ivory	A hard, white substance, made from the tusks of elephants, which can be carved.

Countries in Western Africa



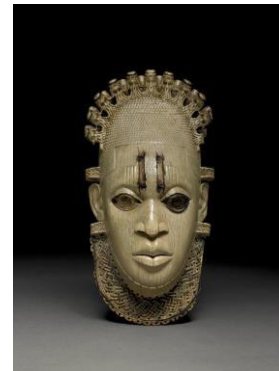
Art



Antelope Headdress, Mali (Bamana peoples) 19th century/early 20th century (Metropolitan Museum of Art, U.S.)



Benin Plaque, Nigeria (Edo peoples) 16th century (British Museum)



Benin Ivory Mask of Queen Mother, Nigeria (Edo peoples) 16th century (British Museum)



Benin Ivory Salt Cellar, Nigeria (Edo peoples) 17th century (British Museum)